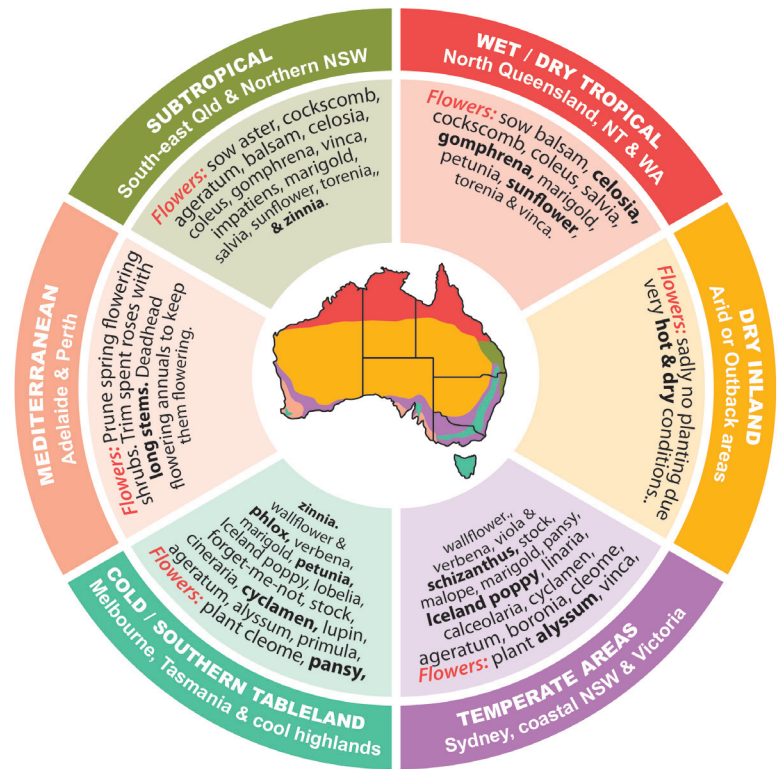


AUTUMN

Flowers Planting Guide By Temperate/Regional Zones

For Autumn Herb, Fruit and Vegetable
Planting or Seasonal Planting Guides;
www.aboutthegarden.com.au



Subtropical (includes: South-east Qld & Northern NSW)

Sow ageratum, alyssum, candytuft, carnation, cineraria, coreopsis, cornflower, cyclamen, delphinium, dianthus, everlasting daisy, Iceland poppy, impatiens, marigolds, sweet pea and viola.

Wet & Dry Tropical (includes: North Queensland, NT & WA)

Sow ageratum, aster, balsam, carnation, celosia, chrysanthemum, cockscomb, coleus, cosmos, dahlia, dianthus, everlasting daisy, gaillardia, gazania, geranium, gerbera, impatiens, kangaroo paw, African marigold, French marigold, nasturtium, petunia, portulaca, rudbeckia, salvia, snapdragon, sunflower, torenia, verbena, wallflower and zinnia.

Dry Inland (includes: Arid or Outback areas)

Sow chrysanthemum, cockscomb, cosmos, dahlia, everlasting daisy, gazania, geranium, gerbera, impatiens, kangaroo paw, marigold, nasturtium, petunia, portulaca, rudbeckia, salvia, snapdragon, sunflower, torenia, verbena, wallflower and zinnia.

Temperate Areas (includes: Sydney, coastal NSW & Victoria)

Plant alyssum, calendula, candytuft, carnation, cineraria, cornflower, cosmos, daisy, foxglove, lobelia, nasturtium, nemesia, pansy, poppy, primula, schizanthus, snapdragon, sweet pea and viola.

Cool & Southern Tablelands (includes: Melbourne & cool highlands)

Plant alyssum, aurora daisy, cineraria, cornflower, cyclamen, English daisy, French marigold, Iceland poppy, lobelia, lupin, pansy, polyanthus, primula, snapdragon, stock, strawflower, sweet pea and viola.

Mediterranean (includes: Adelaide & Perth)

Plant ageratum, alyssum, cineraria, cyclamen, forget-me-not, French marigold, Iceland poppy, lobelia, lupin, pansy, phlox, primula, stock and wallflower.