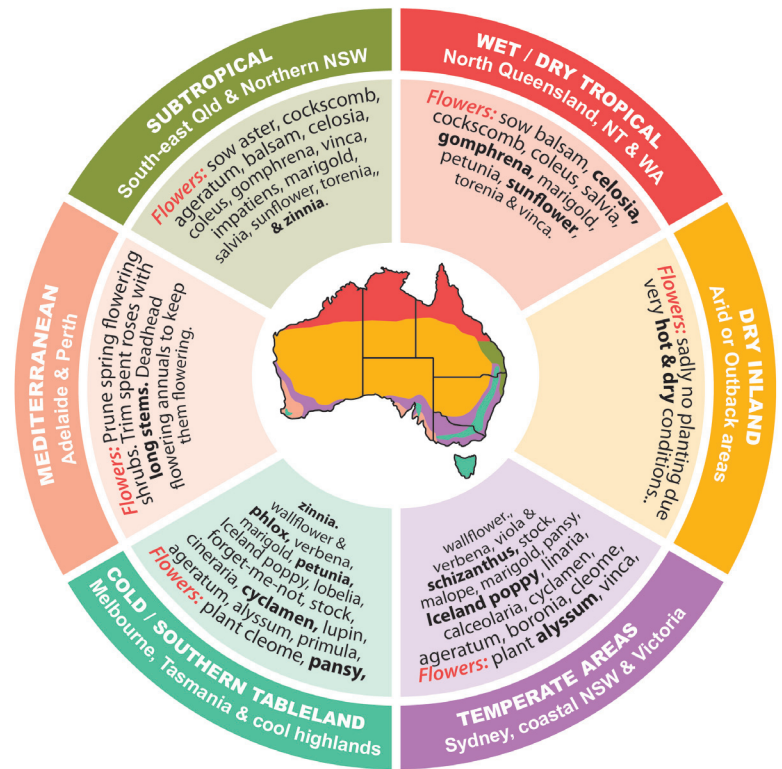


Summer

Flowers Planting Guide By Temperate/Regional Zones

For Summer Herb, Fruit and Vegetable
Planting or Seasonal Planting Guides;
www.aboutthegarden.com.au



Subtropical (includes: South-east Qld & Northern NSW)

sow ageratum, aster, balsam, celosia, cockscomb, coleus, gomphrena, impatiens, marigold, salvia, sunflower, torenia, vinca and zinnia.

Wet & Dry Tropical (includes: North Queensland, NT & WA)

sow balsam, celosia, cockscomb, coleus, gomphrena, marigold, petunia, salvia, sunflower, torenia and vinca.

Dry Inland (includes: Arid or Outback areas)

No sowing or planting throughout summer due to hot and dry conditions.

Temperate Areas (includes: Sydney, coastal NSW & Victoria)

Plant ageratum, alyssum, boronia, calceolaria, cleome, cyclamen, Iceland poppy, linaria, malope, marigold, pansy, schizanthus, stock, verbena, vinca, viola and wallflower.

Cool & Southern Tablelands (includes: Melbourne & cool highlands)

Plant ageratum, alyssum, cineraria, cleome, cyclamen, forget-me-not, Iceland poppy, lobelia, lupin, marigold, pansy, petunia, phlox, primula, stock, verbena, wallflower and zinnia.

Mediterranean (includes: Adelaide & Perth)

Prune spring-flowering shrubs. Trim spent roses with long stems. Deadhead flowering annuals to keep them flowering.