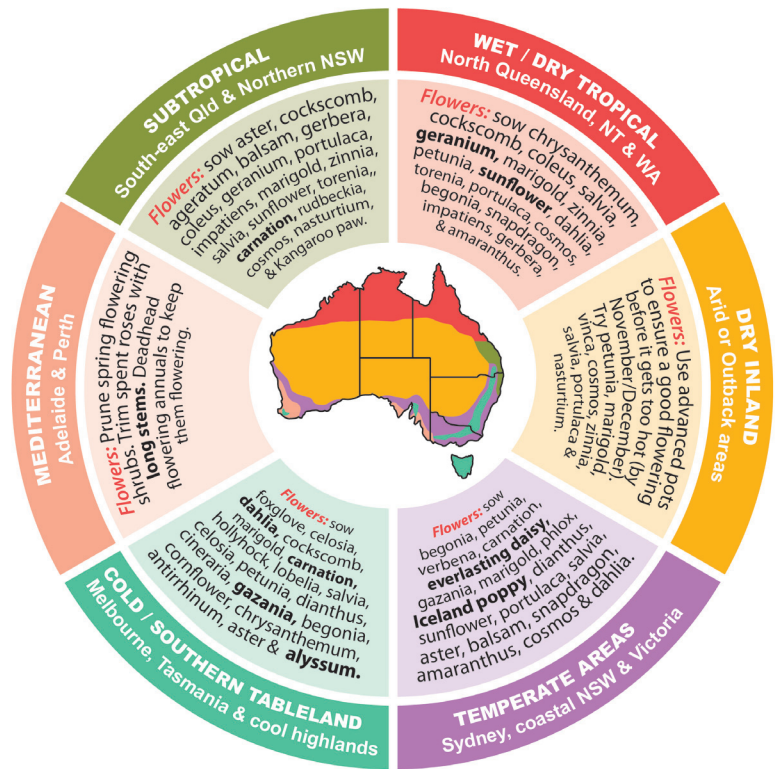


Spring

Flowers Planting Guide

By Temperate/Regional Zones

For Spring Herb, Fruit and Vegetable Planting or Seasonal Planting Guides;
www.aboutthegarden.com.au



Subtropical (includes: South-east Qld & Northern NSW)

Sow ageratum, aster, balsam, carnation, chrysanthemum, cockscomb, coleus, cosmos, dahlia, dianthus, everlasting daisy, gazania, geranium, gerbera, impatiens, kangaroo paw, marigold, nasturtium, petunia, portulaca, rudbeckia, salvia, snapdragon, sunflower, torenia, verbena and zinnia.

Wet & Dry Tropical (includes: North Queensland, NT & WA)

Sow ageratum, amaranthus, begonia, chrysanthemum, cockscomb, coleus, cosmos, dahlia, dianthus, everlasting daisy, gazania, geranium, gerbera, impatiens, kangaroo paw, marigold, nasturtium, petunia, portulaca, rudbeckia, salvia, snapdragon, sunflower, torenia, verbena and zinnia.

Dry Inland (includes: Arid or Outback areas)

If planting flowers, use advanced pots to ensure a good flowering before it gets too hot (by November/December). Try petunia, vinca, cosmos, marigold, salvia, portulaca, nasturtium and zinnia.

Temperate Areas (includes: Sydney, coastal NSW & Victoria)

Sow amaranthus, aster, balsam, begonia, carnation, chrysanthemum, cockscomb, coleus, cosmos, dahlia, dianthus, everlasting daisy, gazania, gerbera, impatiens, marigold, nasturtium, petunia, phlox, Iceland poppy, portulaca, rudbeckia, salvia, snapdragon, sunflower, torenia, verbena and zinnia.

Cool & Southern Tablelands (includes: Melbourne & cool highlands)

Sow alyssum, antirrhinum, aster, begonia, carnation, celosia, chrysanthemum, cineraria, cockscomb, coleus, cornflower, cosmos, dahlia, dianthus, foxglove, gazania, hollyhock, impatiens, lobelia, marigold, petunia, salvia and zinnia.

Mediterranean (includes: Adelaide & Perth)

Sow alyssum, antirrhinum, aster, begonia, carnation, cornflower, cosmos, dahlia, daisies, dianthus, foxglove, gazania, impatiens, marigold, petunia, salvia and zinnia.